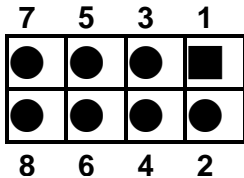


PE-6SD-R40

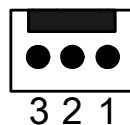
5-Slot PICMG 1.3 PCIe to PCI Bridge Backplane User Manual Ver. 4.0

1. USB1, USB2: External 4 Port USB Connectors From the Mainboard



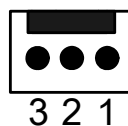
PIN	DESCRIPTION	PIN	DESCRIPTION
1	USBVCC	2	GND
3	DATA-	4	DATA+
5	DATA+	6	DATA-
7	GND	8	USBVCC

2. FAN1, FAN2, FAN3, FAN4: Fan Connector



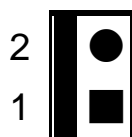
PIN	DESCRIPTION
1	GND
2	+12V
3	NC

3. ATXCTL1: Backplane to Mainboard ATX Power Control Connector



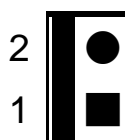
PIN	DESCRIPTION
1	GND
2	PSON#
3	5VSB

4. PWRBTN: Power On Button



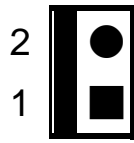
PIN	DESCRIPTION
1	GND
2	PWRBT#

5. RESET: Reset Button Connector



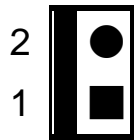
PIN	DESCRIPTION
1	GND
2	SHB_RST#

6. PWRGD: Power Good Connector



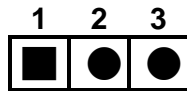
PIN	DESCRIPTION
1	GND
2	PWRGD

7. SM-BUS: System Management BUS Connector



PIN	DESCRIPTION
1	SMDAT
2	SMCLK

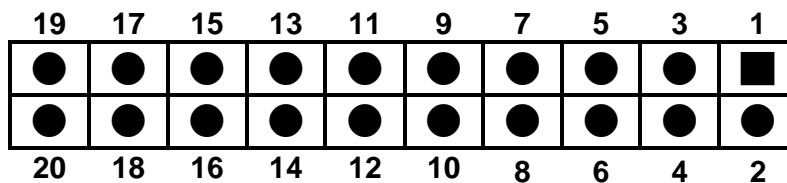
8. CN1: PCIE X16 SDVO Control Signal Pin



PIN	DESCRIPTION
1	EXP_EN
2	SDVO_CLK
3	SDVO_DAT

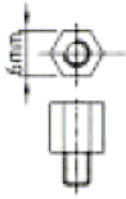
9. IOPWR: The I/O Power Connector indicators for controlling your CPU board

PIN	DESCRIPTION	PIN	DESCRIPTION
1	GND	2	-12V
3	+12V	4	GND
5	IPMB_DA	6	5VSB
7	GND	8	GND
9	IPMB_CL	10	5VSB
11	+5V	12	PWRGD
13	SMDAT	14	SHB_RST#
15	5VSB	16	GND
17	SMCLK	18	PSOEN#
19	+3.3V	20	PWRBT#



10. Notice:

Recommend to use 6mm width spacer to install



b. Torsion must less than 6lb-inch

11. Dimension:

